

## Notice

Some errors are detected in Electronic Notice to Mariners (ENtM) issued between November 2009 and November 2010 by Japan Coast Guard (JCG). This may cause incorrect display on a few ECDIS.

If an ENtM is loaded more than 2 months after the previous ENtM was loaded, incorrect symbols such as shown in the figure 1 may be displayed in some ENC cells on a few ECDIS.

If the latest ENtMs are loaded every month, this error doesn't occur on any ECDIS at all. Fixed ENtM can now be downloaded from [www.jha.or.jp/en/jha/](http://www.jha.or.jp/en/jha/) web-site.

### Relevant Cells

The incorrect symbols may be displayed in the following ENC cells (see also the figure 2 for the areas of the cells).

Table: Relating ENC cells

<b>CELL</b>	<b>AREA</b>
JP34NC80	Eastern Part of Bisan Seto
JP44KU48	Approaches to Ushibuka Ko
JP44L7SP	Amakusa and Approaches to Yatsushiro
JP44LHL2	Approaches to Fukue Shima
JP44M566	Approaches to Sasebo Ko
JP44MEUM	Approaches to Hirado Seto
JP44NC8J	Western Part of Kurushima Kaikyo
JP54M566	Approaches to Sakito Ko
JP54NM14	Approaches to Setoda Ko
JP54NVPT	Hanshi Ko

### Procedures to fix the incorrect symbols

If the incorrect symbols such as shown in the figure 1 are shown on your ECDIS, please perform the following procedures to fix them.

- 1 Delete the cells listed in the above table,
- 2 Reload the deleted cells from the latest base CD,
- 3 Load the ENtM which is posted in the above web-site or which will be issued on or after the 24th December.

If you find something wrong except the above error in the ENC issued by JCG, please contact us at the following e-mail address.

Chart and Navigational Information Division  
Hydrographic and Oceanographic Department, JCG  
e-mail: [chart@jodc.go.jp](mailto:chart@jodc.go.jp)

Figure 1

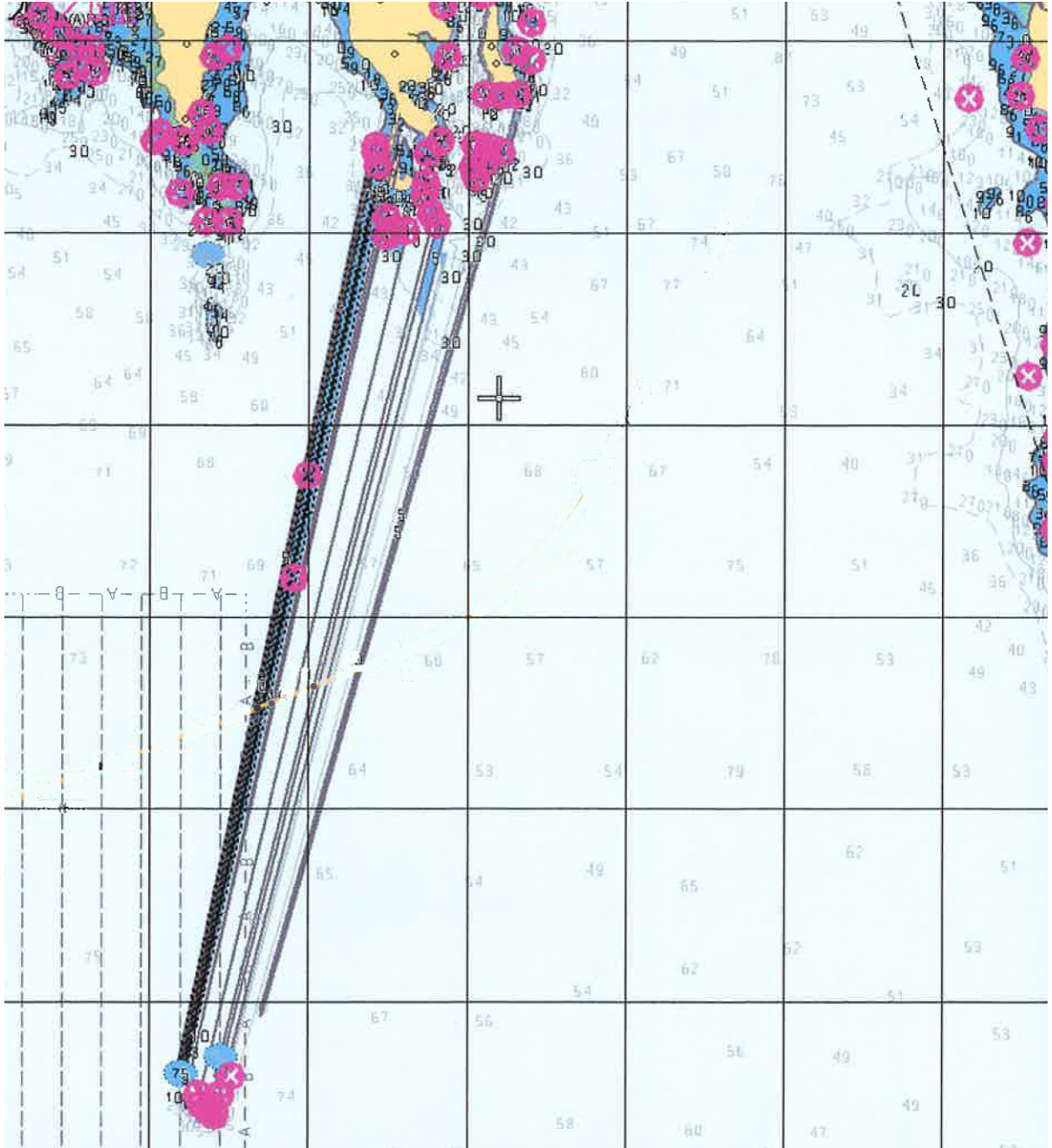


Figure 2

