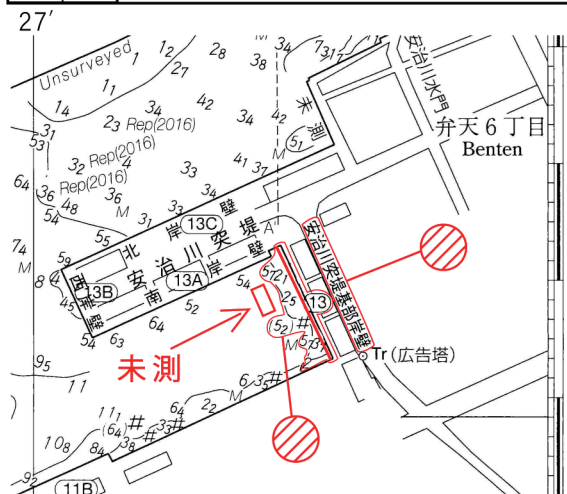
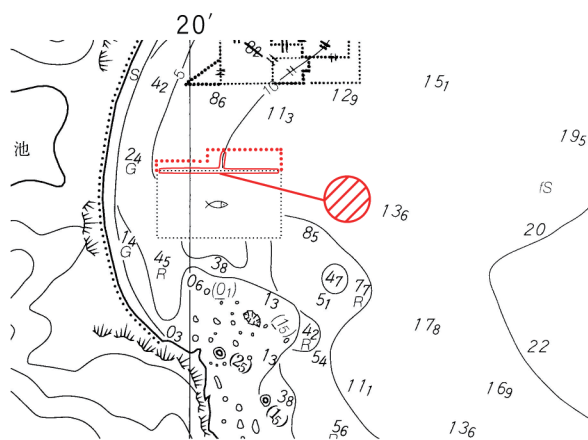


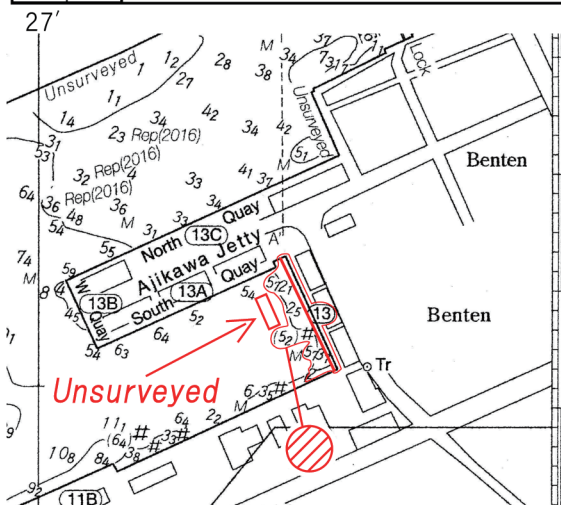
No. <b>W 1 2 3</b> (大阪) (OSAKA)	
NtM 3年(2021)-812	-4年(2022)-122
<ul style="list-style-type: none"> <li>護岸、水深及び岸壁名称について Information about Groyne, Depths &amp; Quay Name.</li> </ul>	



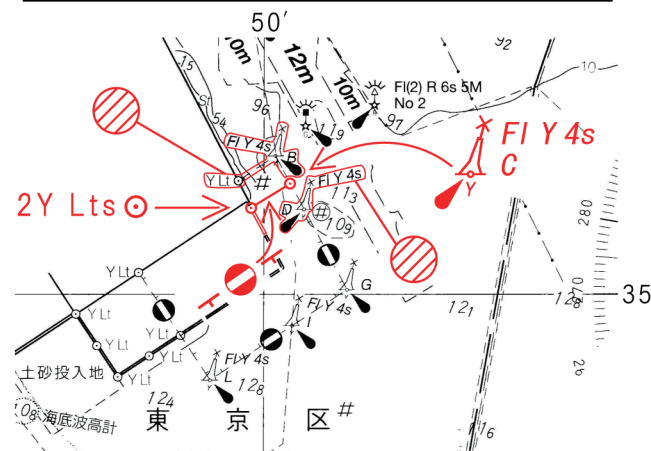
No. <b>W 1 0 6 0</b> (長島港) (NAGASHIMA KO)	
NtM 4年(2022)-73	-121
<ul style="list-style-type: none"> <li>魚礁設置 Fish Haven set.</li> </ul>	



No. <b>JP 1 2 3</b> (OSAKA)	
NtM (2021)-812	-(2022)-122
<ul style="list-style-type: none"> <li>Information about Groyne, Depths &amp; Quay Name.</li> </ul>	



No. <b>W 1 0 6 1</b>	
NtM 4年(2022)-92	-119
<ul style="list-style-type: none"> <li>護岸、航泊禁止区域、灯浮標及び灯について Groyne, Entry Prohibited Area, Light Buoys &amp; Lights.</li> </ul>	



No. <b>W 1 0 2 7</b>	
NtM 4年(2022)-29	-115
<ul style="list-style-type: none"> <li>水深、岸壁名称について Hydrographic Information.</li> </ul>	

本項内容は補正図  
(1枚) により訂正

Correct by Chartlet.

No. <b>JP 1 0 6 1</b>	
NtM (2022)-92	-119
<ul style="list-style-type: none"> <li>Groyne, Entry Prohibited Area, Light Buoys &amp; Lights.</li> </ul>	

